



BAG-R

AUTOMATIC BAGGER

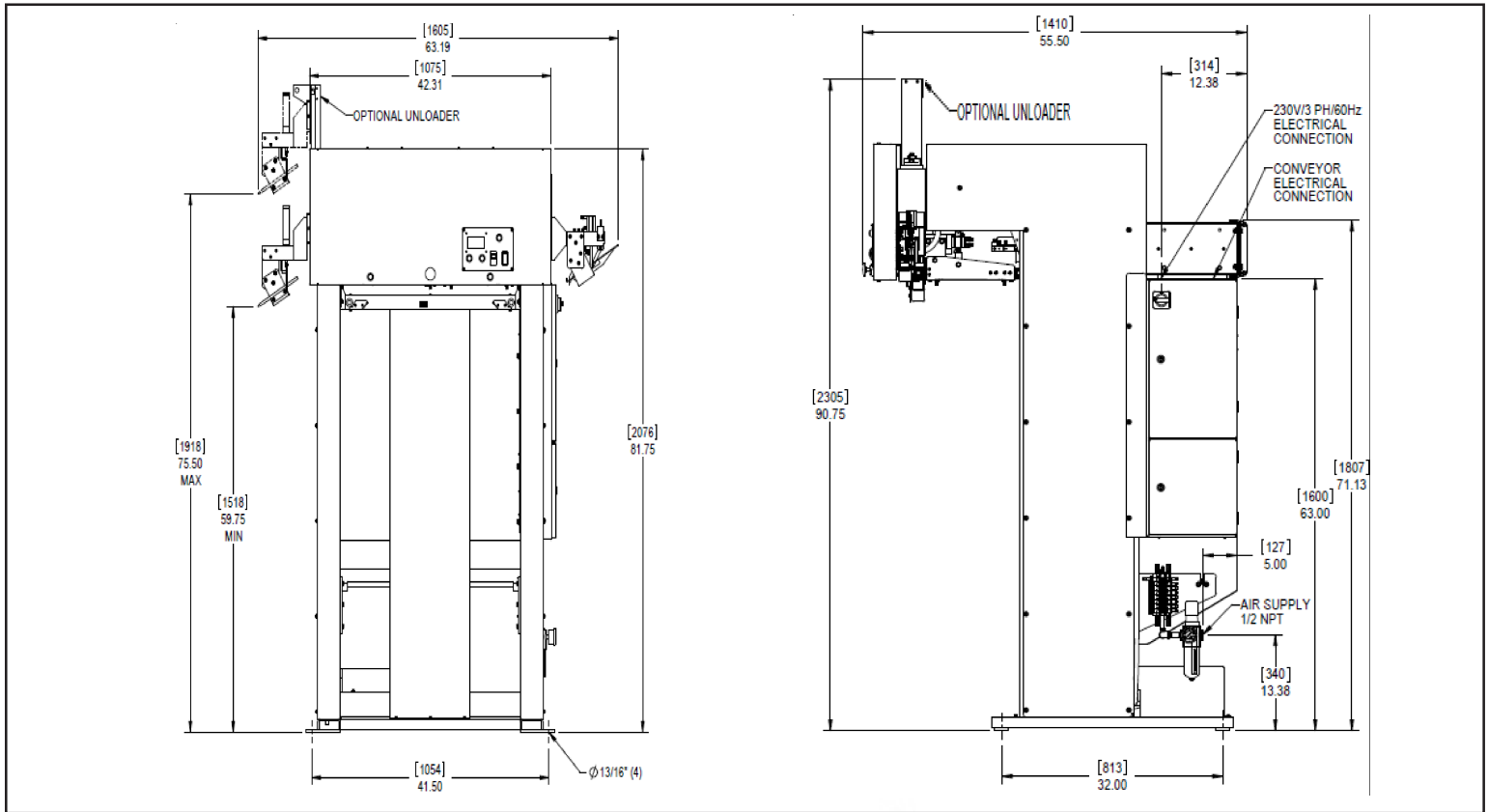


Model BAG

- **FAST**
Up to 280 bundles per hour
- **QUIET SMOOTH OPERATION**
Maintenance free loading arms
- **RELIABLE**
Microprocessor w/ self diagnostics
- **EASY TO CHANGE POLY**
- **MANUAL OPERATION**
- **EASY TO REACH CONTROL PANEL**
- **OPTIONAL LOADER RAIL**
- **OPTIONAL UNLOADER**



BAG TECHNICAL DATA



SPECIFICATIONS

	SAE	Metric
Overall Height w/unloader	90 3/4"	2305
Overall Length	55 1/2"	1410
Overall Width	63 1/4"	1605
Air Inlet	1/2 NPT	1/2 NPT
Air Consumption/Cycle	0.1 CU/FT	2.8 Liters/Cycle
Air Supply	85 PSI	6 BAR
Electrical	230/3/60	380-415/3ph+n/50
Amperage	10 amps	1.8 KW
Net Weight	700lbs	317 KG

Model BAG
Shown with optional Unloader

UNIPRESS

3501 Queen Palm Drive Tampa FL 33619
Telephone (813) 623-3731 FAX (813)626-2565

www.unipresscorp.com